



LTC Mitigation Benefits

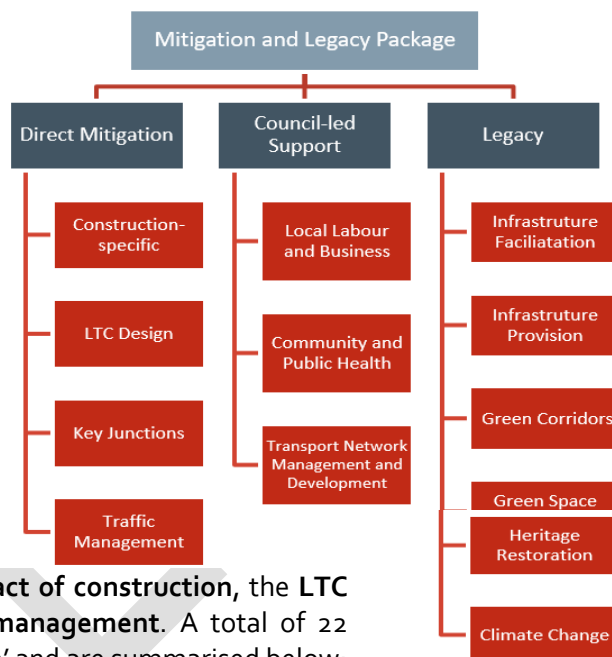


An Executive Summary by Hatch
October 2020

Mitigation and Legacy Measures

vii. An iterative package development process has been undertaken that has led to the creation of a preferred package of 55 measures. These are classified within three overarching 'themes':

- **Direct Mitigation:** measures that address the direct impact of the construction phase, as well as design of the LTC scheme and the resulting traffic and transport implications
- **Council-led Support:** measures that ensure sufficient local resource is available to support local businesses and communities throughout the construction phase and into the transition of the operating scheme
- **Legacy:** measures that will ensure the LTC scheme delivers a lasting legacy across Thurrock and ensure positive local outcomes



Direct Mitigation Measures

viii. The measures have been categorised within the following four 'sub-themes' relating to **impact of construction**, the **LTC Design**, as well as **key junctions** and **traffic management**. A total of 22 measures have been identified within this 'theme' and are summarised below:

Ref.	Scheme Measure	Brief Description
Construction-specific (emissions and transport)		
M1	Ensure optimum phasing of construction	Ensure the construction operations cause the minimum level of disruption by phasing activities.
M2	Reduce the number and/or optimise the location of construction compounds	Ensure the construction operations cause the minimum level of disruption by locating compound sites away from properties and sensitive receptors
M3*	Minimise construction and construction traffic emissions	Ensure best practice approaches are adopted in relation to dust and emissions.
M4	Real-time air quality and noise monitoring at key receptor sites	Install sensors to monitor air quality and noise, with required actions if target limits are exceeded.
M5*	Alter construction hours to reduce noise and disruption in residential areas	Minimum the level of disruption by only applying appropriate on-site working hours
M6	Additional noise mitigation in Chadwell and East Tilbury	Current levels of proposed mitigation are considered insufficient in these sensitive locations.
M12	Smart speed limits that can respond to traffic flows and pollutant concentrations	Ensure that the smart and variable speed limits can be utilised to respond to real-time air quality monitoring data and slow traffic during periods of higher pollution
M13	Use of low-noise road surfacing on the LTC and the local network	As well as utilising low-noise surfacing along the LTC, this surfacing should also be applied on local roads to help off-set the overall level of noise generated from the scheme
M14	Use of best-in-class energy efficient systems for operations	Whilst HE will adopt modern lighting and signage, it is important to confirm that best-in-class energy efficiency is being provided.
M15	Build sufficient earth bunds and noise barriers along the route to reduce noise impact	Whilst landscaping and noise barrier measures are already proposed, it is important to confirm that sufficient provision is being made across the full alignment
M16	Flood risk mitigation and water quality improvement through SuDS	Greater emphasis should be made on the use of SuDS features within the scheme to deliver water quality benefits

M17 *	Revised Proposals for A13/LTC Junction	Alternative proposals to minimise the extensive land sterilisation, property demolition and blight creating by the existing proposals
Key Junctions and Traffic Mitigation		
M18 *	Orsett Cock Roundabout Mitigation	Additional mitigation to negate the negative impact of the LTC scheme upon the A128 approach to the junction.
M19 *	Manorway Roundabout Mitigation	Additional lane capacity on the A1014 and A1013 approaches to ensure port and local traffic movements are not impaired by the LTC.
M20	Traffic Management Measures (Orsett)	Mitigation for additional traffic movements on local roads through local settlements, including HGV movements.
M21	Traffic Management Measures (Horndon)	
M22	Traffic Management Measures (Chadwell St. Mary)	

* designated as high priority measure

Council-led Support

- ix. The LTC scheme will result in pressures upon the way some local businesses can operate, as well as the cohesion of local communities and their access to employment, education and public services and amenities. In turn, this will place additional pressures upon Council resources to support these groups and to continue to undertake their statutory duties. Three areas of **Local Labour and Business, Community and Public Health, and Transport Network Management and Development** have been identified, with a total of 12 measures, as summarised below:

Ref.	Scheme Measure	Brief Description
Local Labour and Business		
CLS1 *	Council-led Local Labour and Business Team	A Council team with the responsibility supporting residents and businesses secure economic benefits from the LTC.
CLS2	Business rates holidays for firms affected during construction	Business rates holidays for those businesses most affected by the LTC scheme during construction.
CLS3	Target for local labour and apprentice use	Establish clear targets for engaging local labour and apprentices during the construction of the LTC scheme
CLS4	Employment opportunities small capital grants scheme	Grants to support voluntary and community organisations who are helping local people into employment
CLS5	Social value procurement	Ensure LTC procurement meets with requirements of the Council commissioning, procurement and grant funding strategy
CLS6	Shop shutter/signage creative improvement programme	Grant funding to improve business environments and tackle perceptions of the local area
CLS7	Green business support scheme	Utilising and expanding on existing green initiatives.
Community and Public Health		
CLS8 *	Council-led Community and Public Health Team	Apply the same principle as the Local Labour and Business Team and create a Local Community and Public Health Team within Thurrock Council.
CLS9	Public Health mitigation during construction	Public Health mitigation measures including the enhancement of public transport to healthcare facilities and the reinforcement of local NHS provision.
CLS10	Community engagement during construction	Support to enable community engagement during the construction of the LTC scheme.
CLS11	Community investment small capital grants scheme	Capital grants to facilitate aesthetic and environmental improvements within the community.
Transport Network Management and Development		

CLS12	Transport Network Management and Development Resource	Additional Council resource provision to cover the requirements to manage and develop the transport network in response to the impacts of the LTC construction.
-------	-------------------------------------------------------	-----------------------------------------------------------------------------------------------------------------------------------------------------------------

* designated as high priority measure

Legacy Measures

- x. This final 'theme' represents measures to deliver a lasting legacy across Thurrock and positive local outcomes. The proposed measures have been categorised within the following six 'sub-themes' that seek to **facilitate infrastructure** delivery, directly **provide infrastructure**, deliver **Green Corridors** and **enhance green space, restore heritage** and reduce impact upon **climate change**. A total of 21 measures have been identified within this 'theme' and are summarised below:

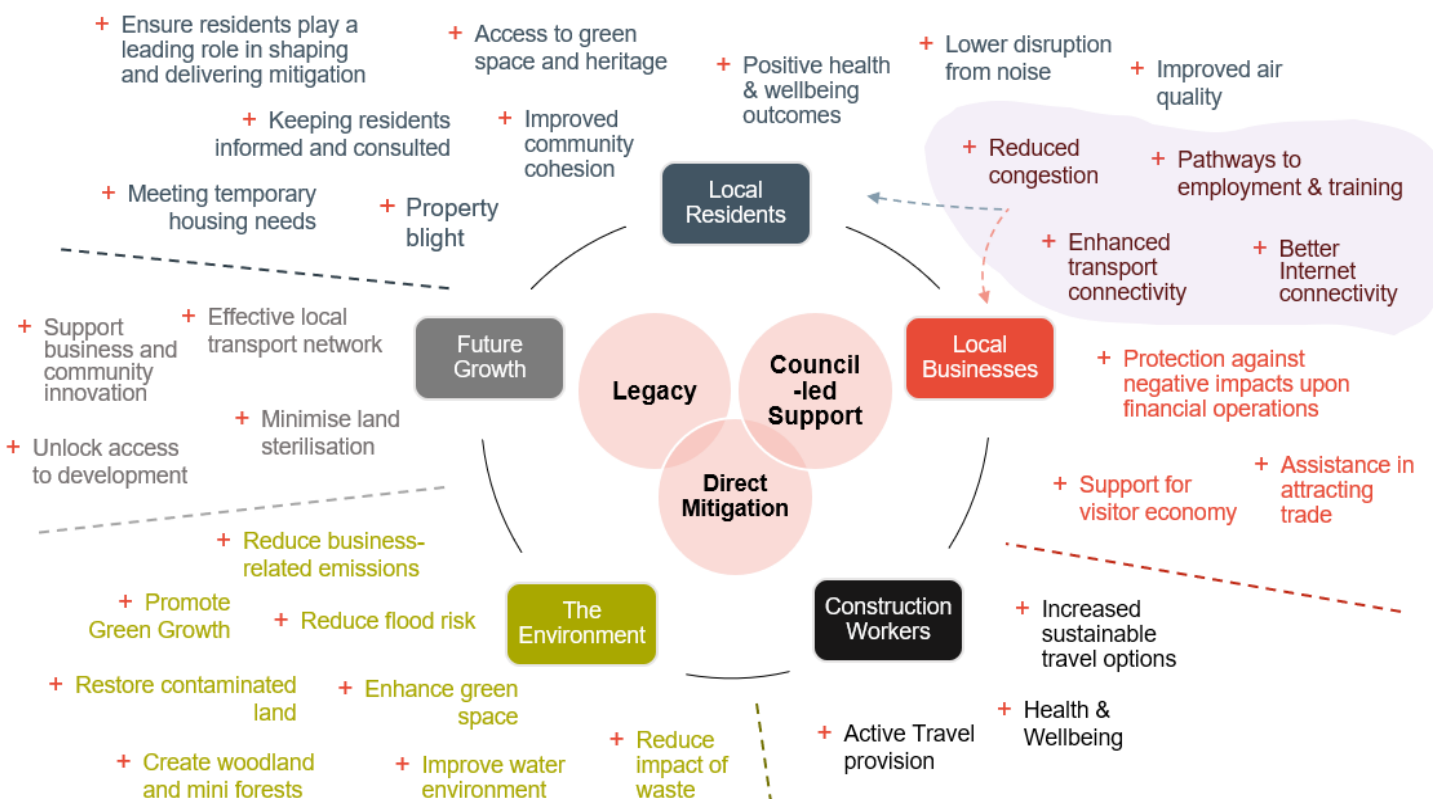
Ref.	Scheme Measure	Brief Description
Infrastructure Facilitation		
L1 *	Passive provision for LTC Junctions	Safeguarding for the future provision of junctions onto the LTC at East Tilbury and South Ockendon.
L2	A13 East-facing Access Support and Facilitation	Whilst this scheme will be delivered in isolation, it is requested that HE acknowledge the importance of this scheme alongside the delivery of the LTC and actively support and enable its delivery.
L3	Tilbury Link Road Enabling Works	Construct any elements of the proposed haul road that will fall within the general alignment of the TLR alignment to a standard to support the subsequent delivery of the Link Road.
L4	Asda Roundabout Enhancement	The requirement for enhancements should be actively examined alongside other potential highway improvements.
L5	Public transport provision on the LTC	Recognising the long-term aspiration for the LTC to be utilised for cross-river public transport connections.
L6	Distributor Road Facilitation	Maximise opportunities to utilise the construction of the LTC to enable future distributor roads to be more readily delivered.
Infrastructure / Highway Provision		
L7 *	Permanent Multi-modal rail crossing	Construct the proposed temporary bridge over the Tilbury Loop rail line to a width and standard that would enable it to be permanently adopted as part of the future local highway, walking and cycling network.
L8 *	A1012 Junction and Medebridge Road Improvement	Deliver the proposed construction haul road along Medebridge Road alignment from the A13 to Grangewater to a sufficient width and standard to enable it to be adopted by the Council.
L9	Daneholes Roundabout Enhancement	Provide a bus lane on the outside lane on the A1013 Stanford Road approach to the roundabout to enhance priority for buses.
L10	Improve Internet / 5G Connections	Utilise the construction phase of the LTC as an opportunity to lay down internet and 5G cables within the alignment and make provision on all bridges and tunnels, as appropriate
L11	Building Legacy Housing Provision	Provision of worker accommodation at Stanford-le-Hope that can be left as a legacy for Thurrock Council to use.
Green Corridors and PRow Enhancements		
L12	Optimising bridge crossing provision	Ensuring that the proposed re-provision of bridges across the LTC, along existing corridors, deliver sufficient legacy provision to encourage active sustainable travel and support future growth.
L13 *	Two Forts Way Project (TFWP)	The TFWP is a comprehensive masterplan for the coastal area incorporating the re-establishment of the TFW, through the repair to the sea wall and creation of a green corridor.
L14	Complete and improve the PRow network	A range of further improvements to complete gaps and enhance the current network of bridleways, footpaths and cycleways to complement the TFWP and the LTC bridge crossings.

Green Space Enhancements and Heritage Restoration		
L15	Enhanced Green Space	Enhance key sites (Koala Park, King George Playing Field, Blackshot Nature Area) that are currently of low quality and in need of investment.
L16 *	Coalhouse Fort and East Tilbury Natural and Cultural Heritage Area Project	Securing the legacy of Coalhouse Fort and the surrounding natural and cultural landscape through a comprehensive and integrated restoration project.
L17	Enabling the restoration of the historic landfill site and cleaning the marine habitat	Support and facilitate the collaborative partnership of organisations seeking to deliver the restoration of the site at Goshams Farm.
Climate Change Measures and Incentives		
L18	Incentives for low-emission vehicles to use the LTC	Ensure that electric and/or low-emission vehicles are incentivised to use the LTC with discounted or free use.
L19 *	Target (with penalties) for low-emission vehicle usage on the LTC	Low-emission vehicle usage targets with financial penalties payable to Thurrock in the event of exceedance.
L20	Carbon offsetting of the LTC scheme	Carbon offsetting measures across Thurrock that offset the CO ₂ produced by the construction and operation of the LTC
L21	Tree Planting across Thurrock	Additional street tree planting initiatives and the delivery of LTC Forest aspirations.

* designated as high priority measure

Benefits Mapping

xi. The diagram below provides an overview of the benefits delivered by the whole package of measures



HATCH



DRAFT

www.hatch.co.uk

London: 0207 336 6188 Manchester: 0161 234 9910